

Appendix 4 – Relevant Maps and Figures

Austral Public School Upgrade

Acknowledgement of Country

The NSW Department of Education acknowledges Dharug Peoples, the traditional custodians of the land on which upgrades to Austral Public School are proposed.

We pay our respects to their Elders past and present and celebrate the diversity of Aboriginal people and their ongoing cultures and connections to the lands and waters of Australia.

The NSW Department of Education is committed to honouring Aboriginal peoples' cultural and spiritual connections to the land, waters and seas and their rich contribution to society.

The NSW Department of Education recognises that by acknowledging our past, we are laying the groundwork for a future that embraces all Australians; a future based on mutual respect and shared responsibility.

1. Relevant Maps and Figures



Figure 1: Site Location Plan, Site outlined in red (Source: SIX Maps)



Figure 2: Aerial view of the site highlighted in red (Source: Nearmap)

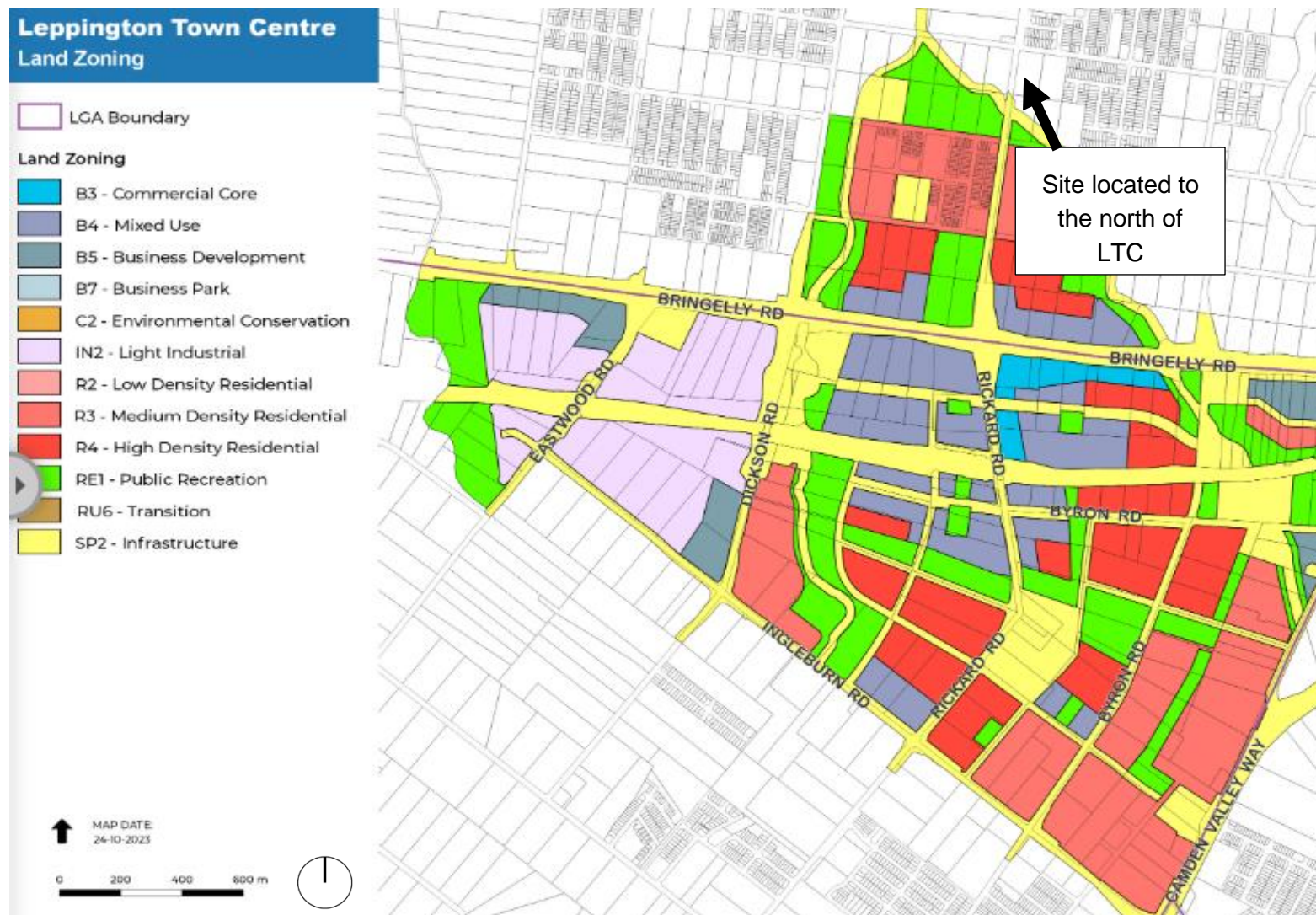


Figure 3: Land zoning proposed under the LTC Planning Proposal (Source: Leppington Town Centre | Your Voice Camden, nsw.gov.au)

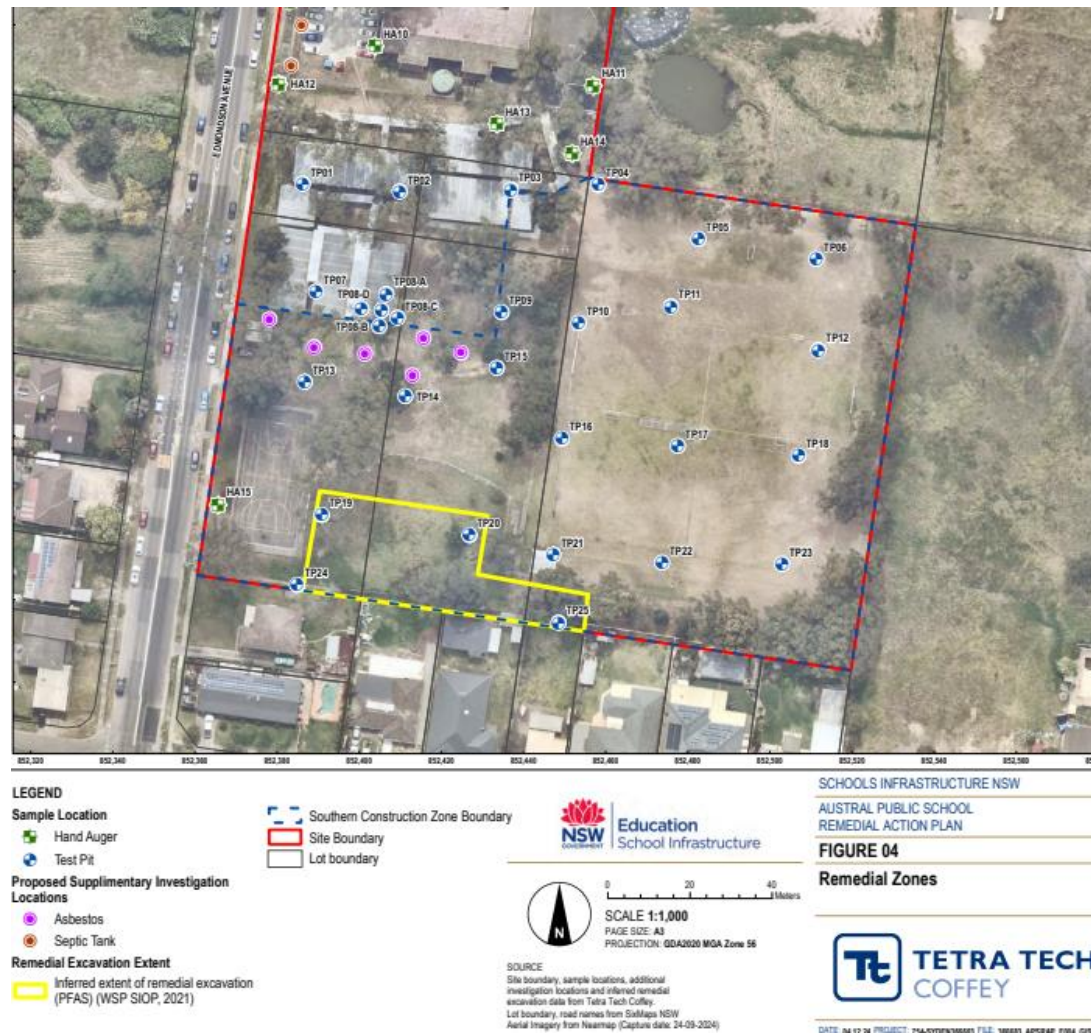


Figure 4: Remedial excavation extent (Source: Tetra tech Coffey)

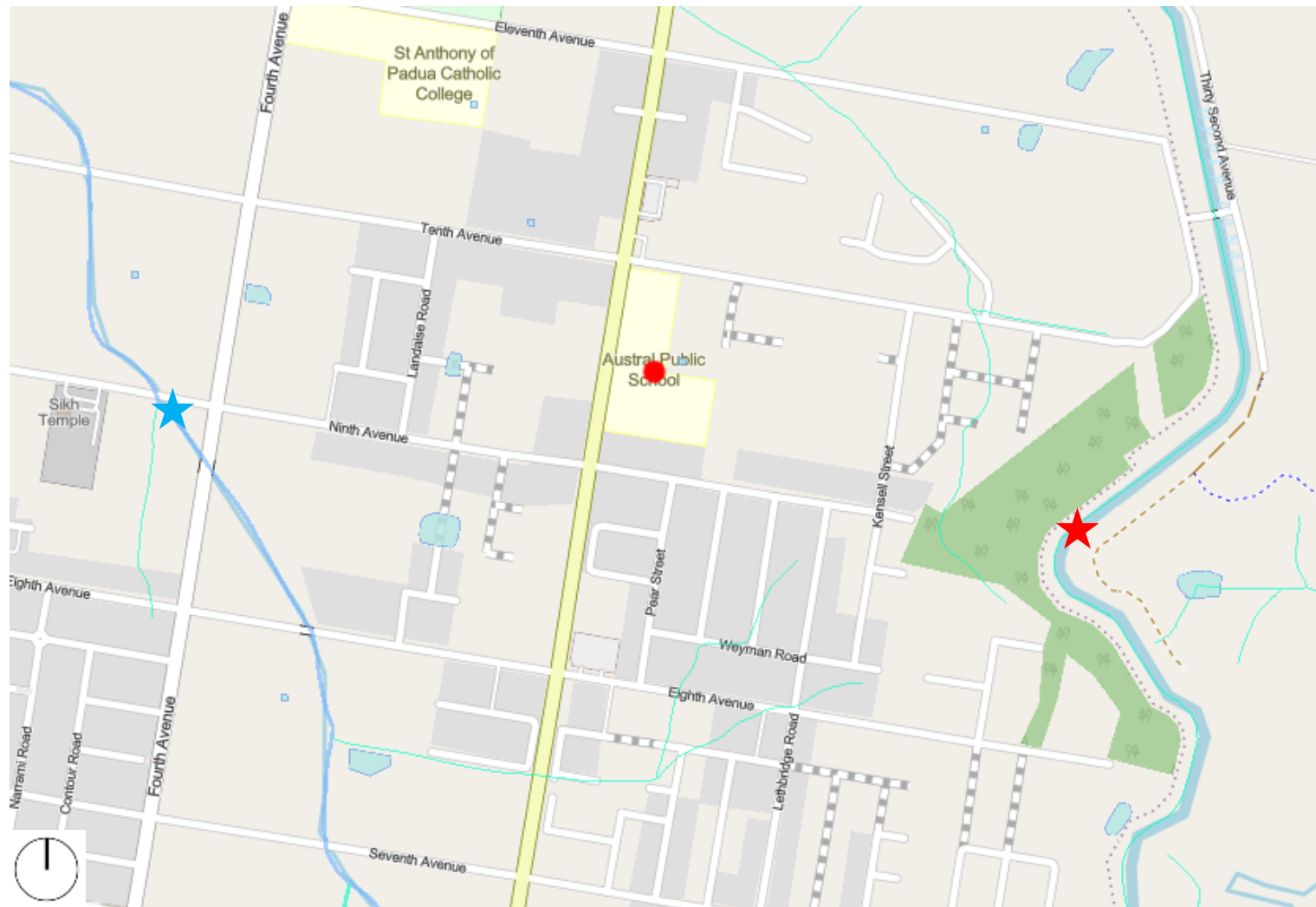


Figure 5: Hydroline Mapping (Source: SEED)

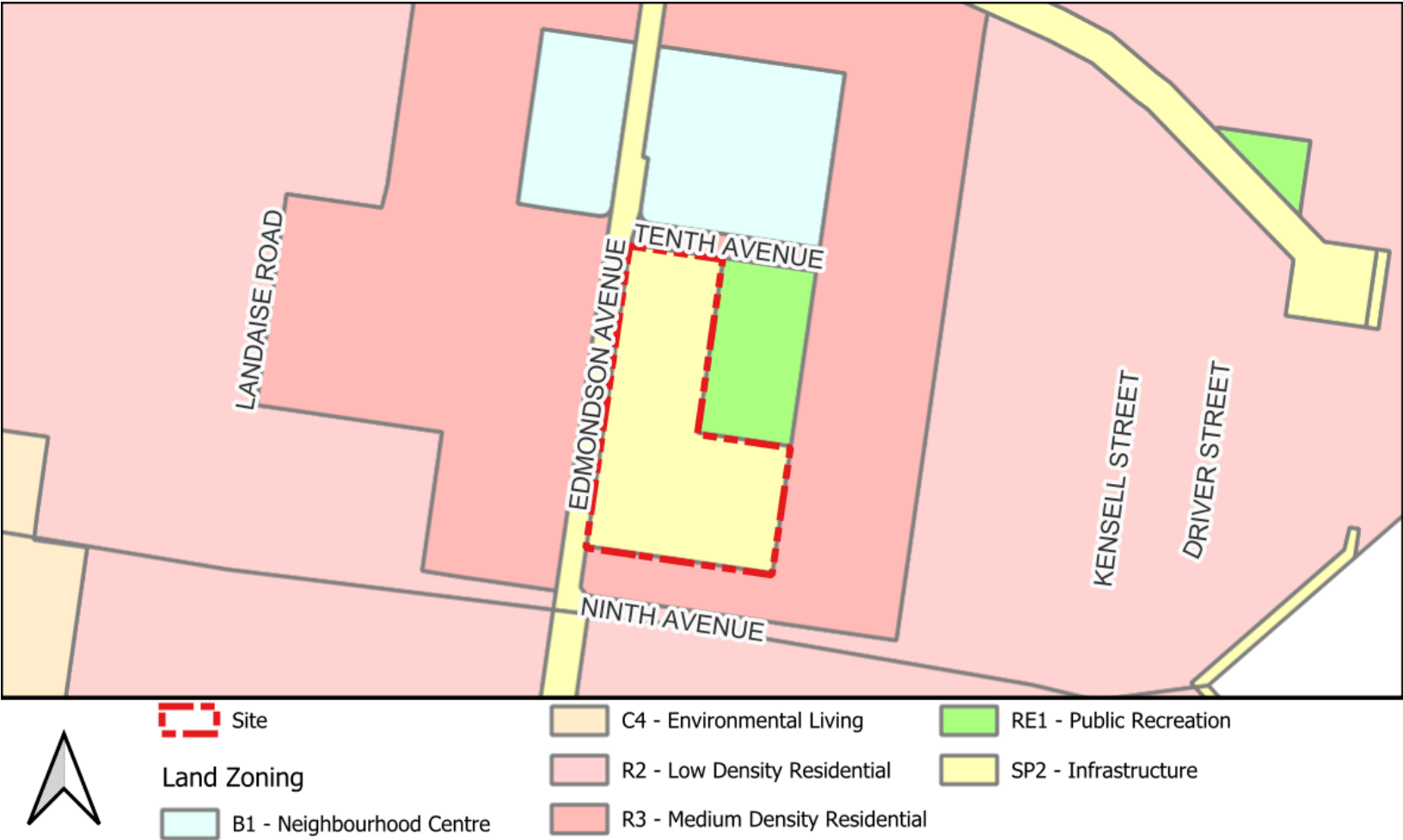


Figure 6: Land Use Map with site outlined in red (Source: Gyde GIS data from NSW DPHI Spatial Viewer)

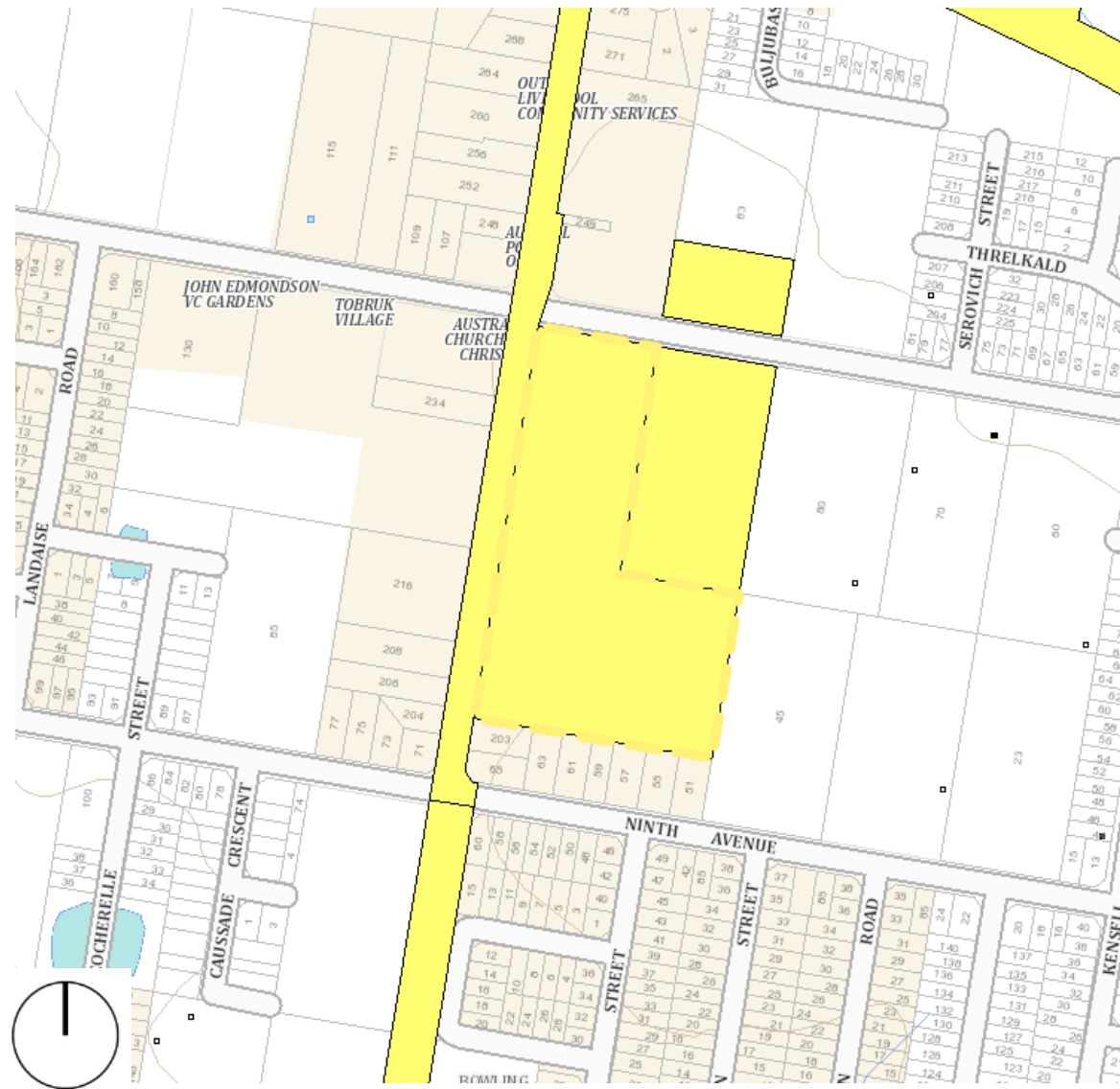


Figure 7: Relevant Acquisition Authority Map (Source: NSW Spatial Viewer)

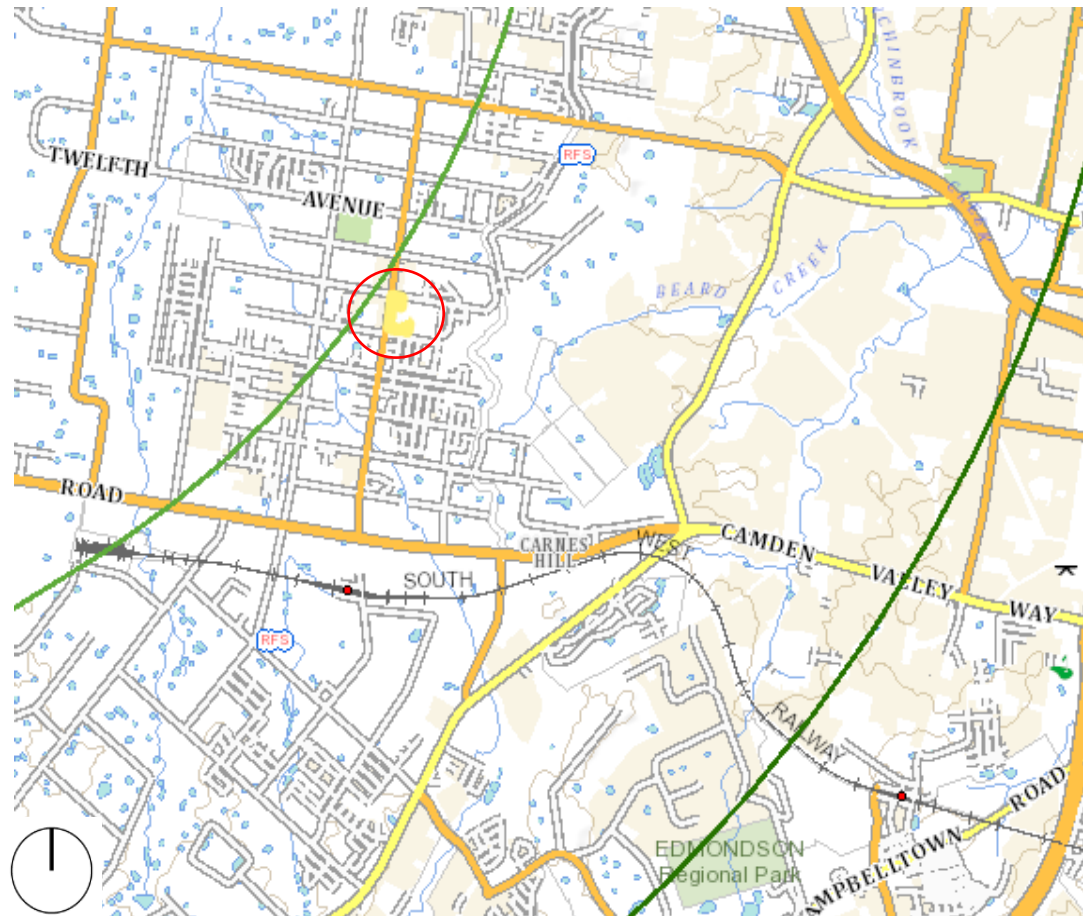


Figure 8: Wildlife Buffer Zone Map (Source: NSW Spatial Viewer)

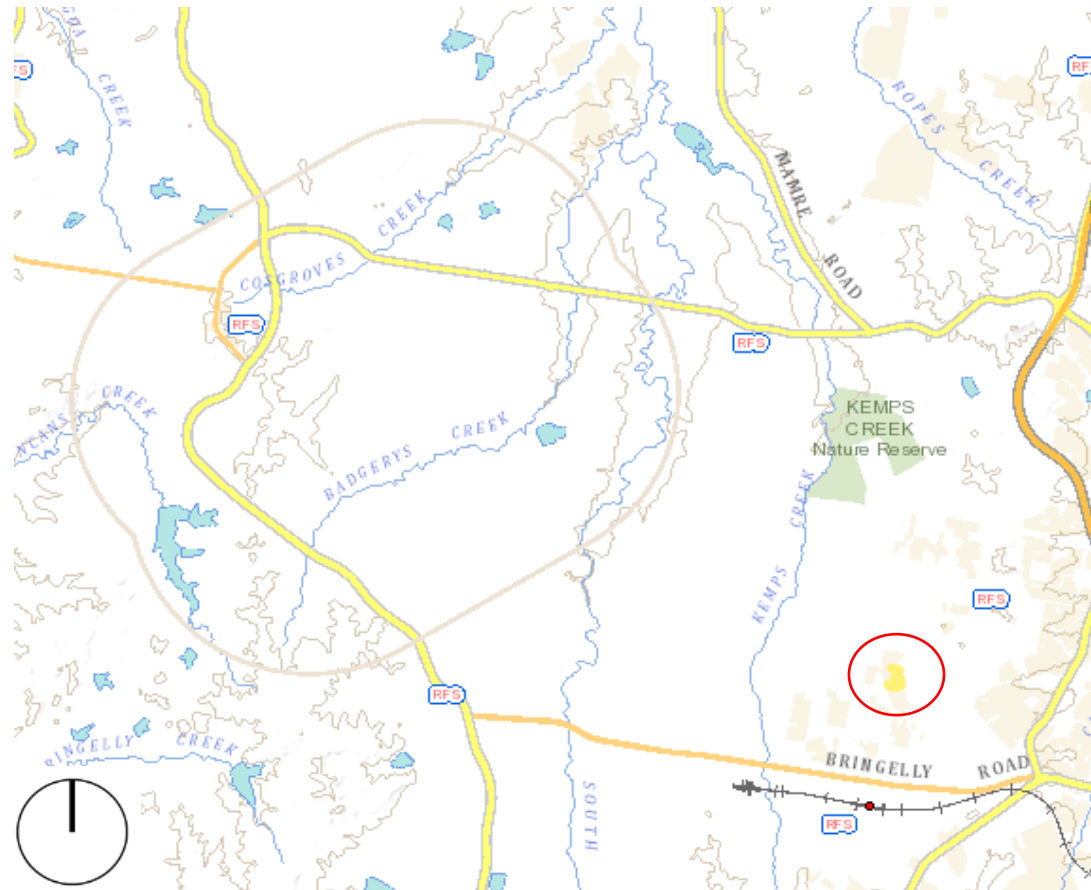


Figure 9: Wind Turbine Buffer Map (Source: NSW Spatial Viewer)

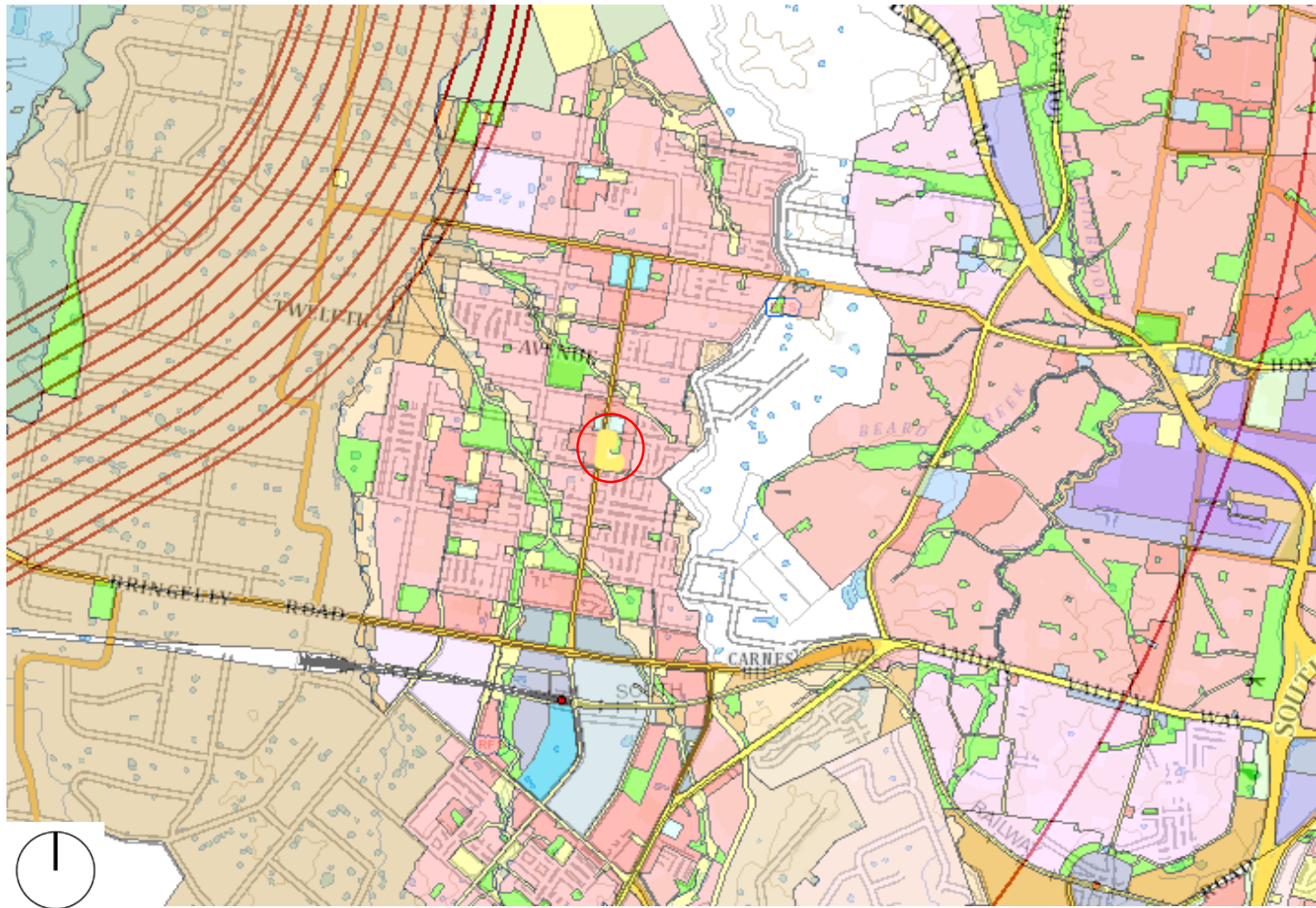


Figure 10: Obstacle Limitation Surface Map (Source: NSW Spatial Viewer)

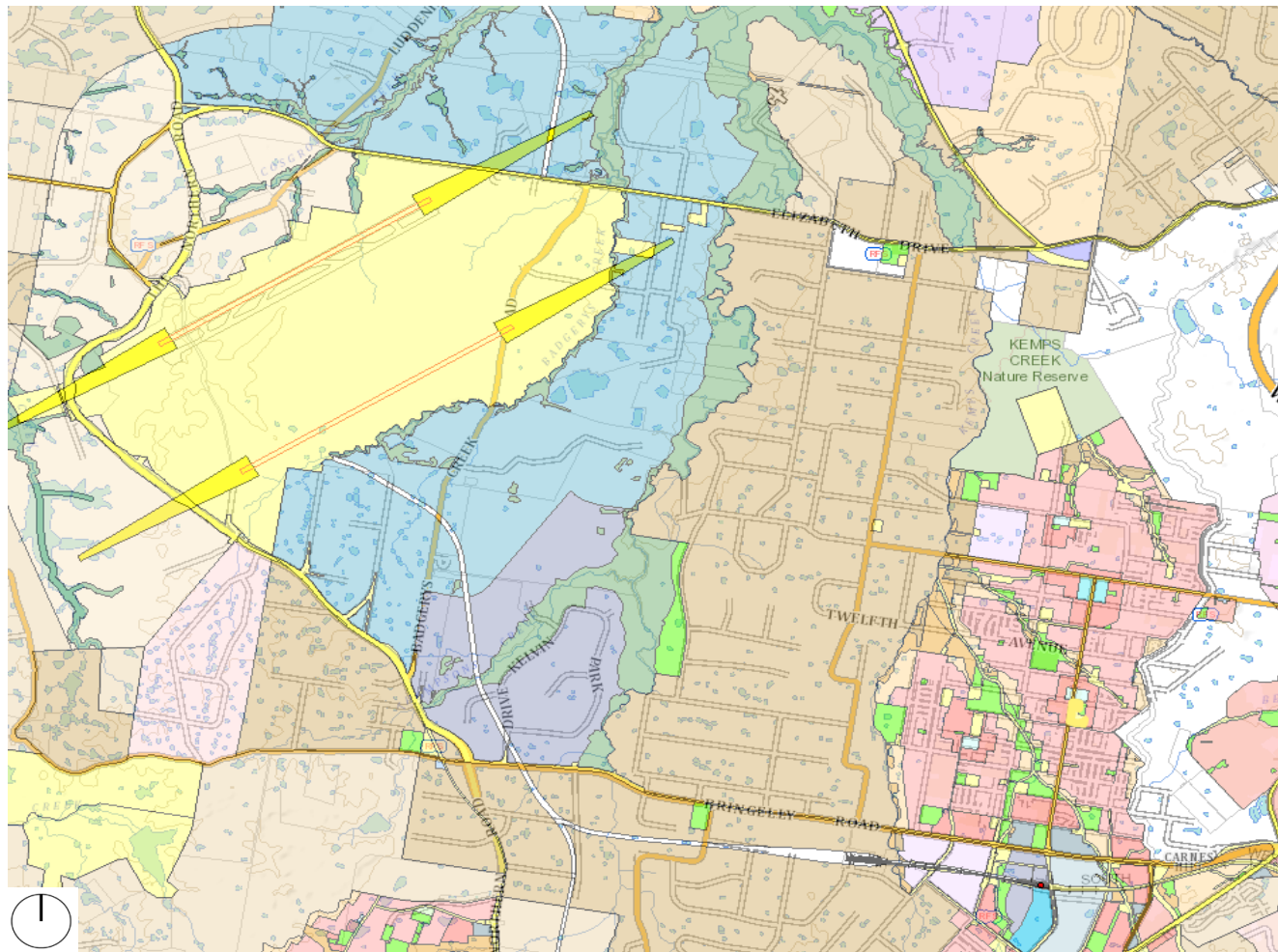


Figure 11: Public Safety Area Map (Source: NSW Spatial Viewer)



Figure 12: Remedial Zones (Source: Tetra Tech Coffey)



Figure 13: Pre-development PMF flood extent (Source: Stantec)

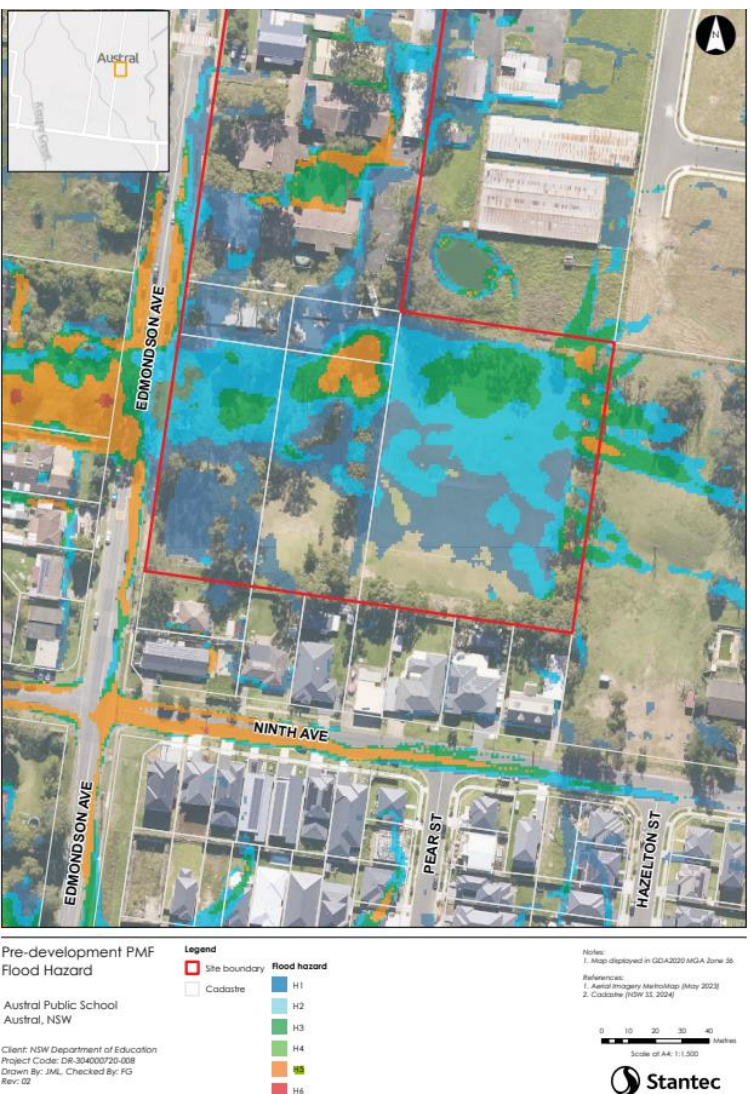


Figure 14: Pre-development PMF flood hazard (Source: Stantec)

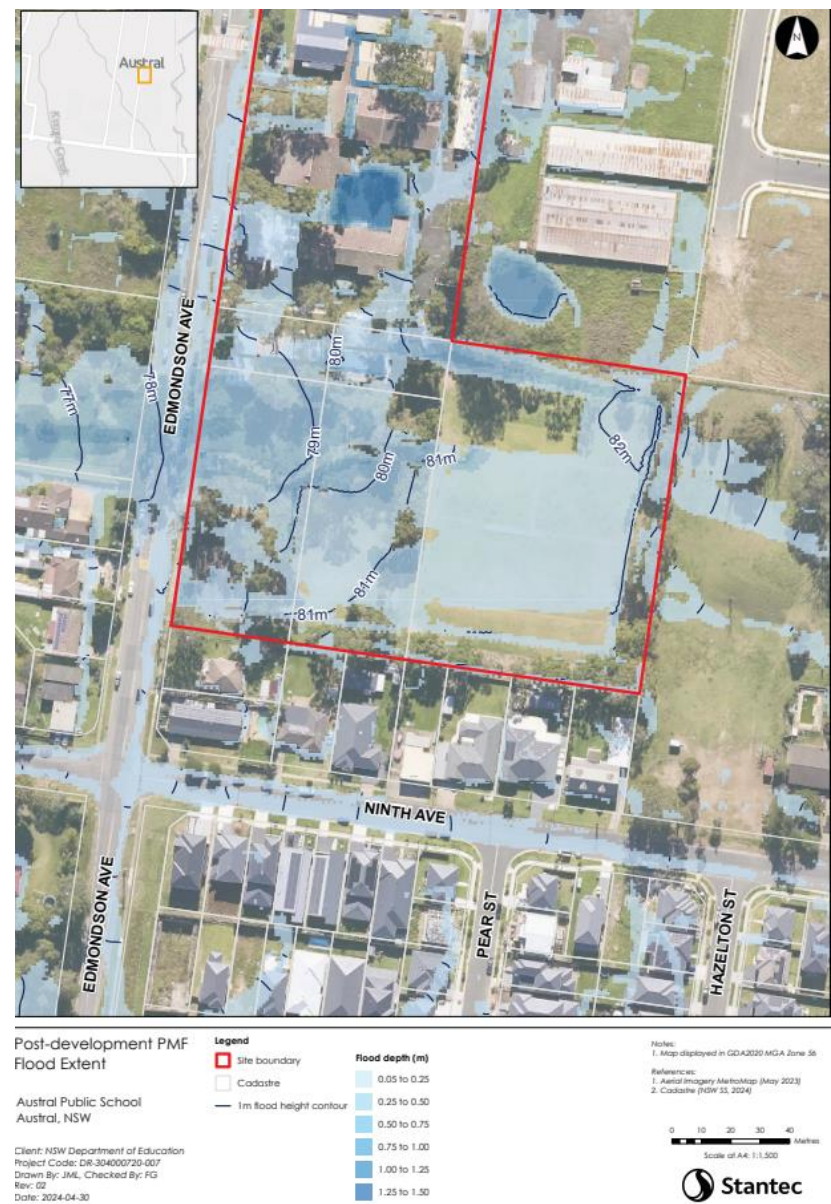


Figure 15: Post development PMF flood extent (Source: Stantec)

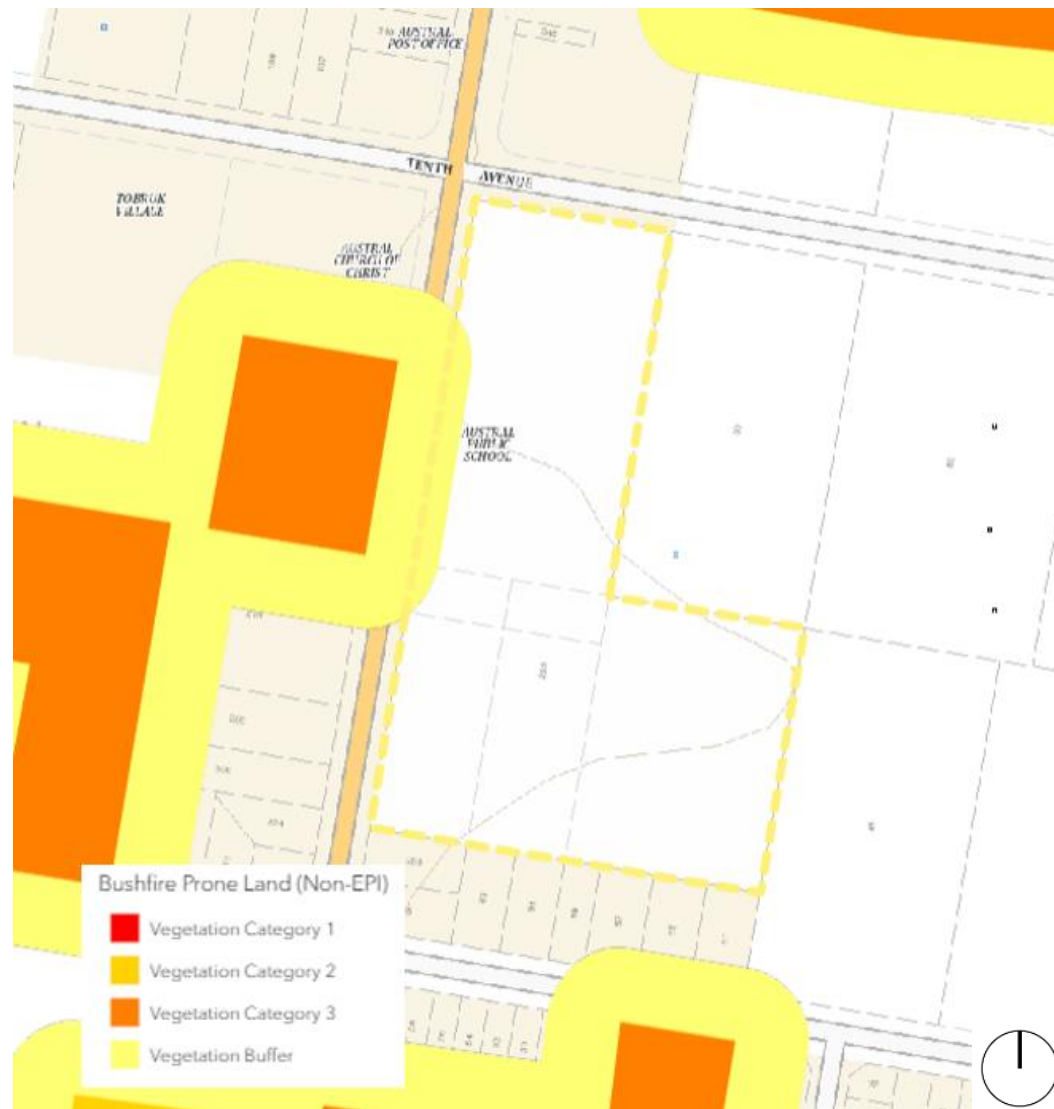


Figure 16: Bush fire buffer zones, site highlighted in yellow boundary (Source: NSW Legislation)

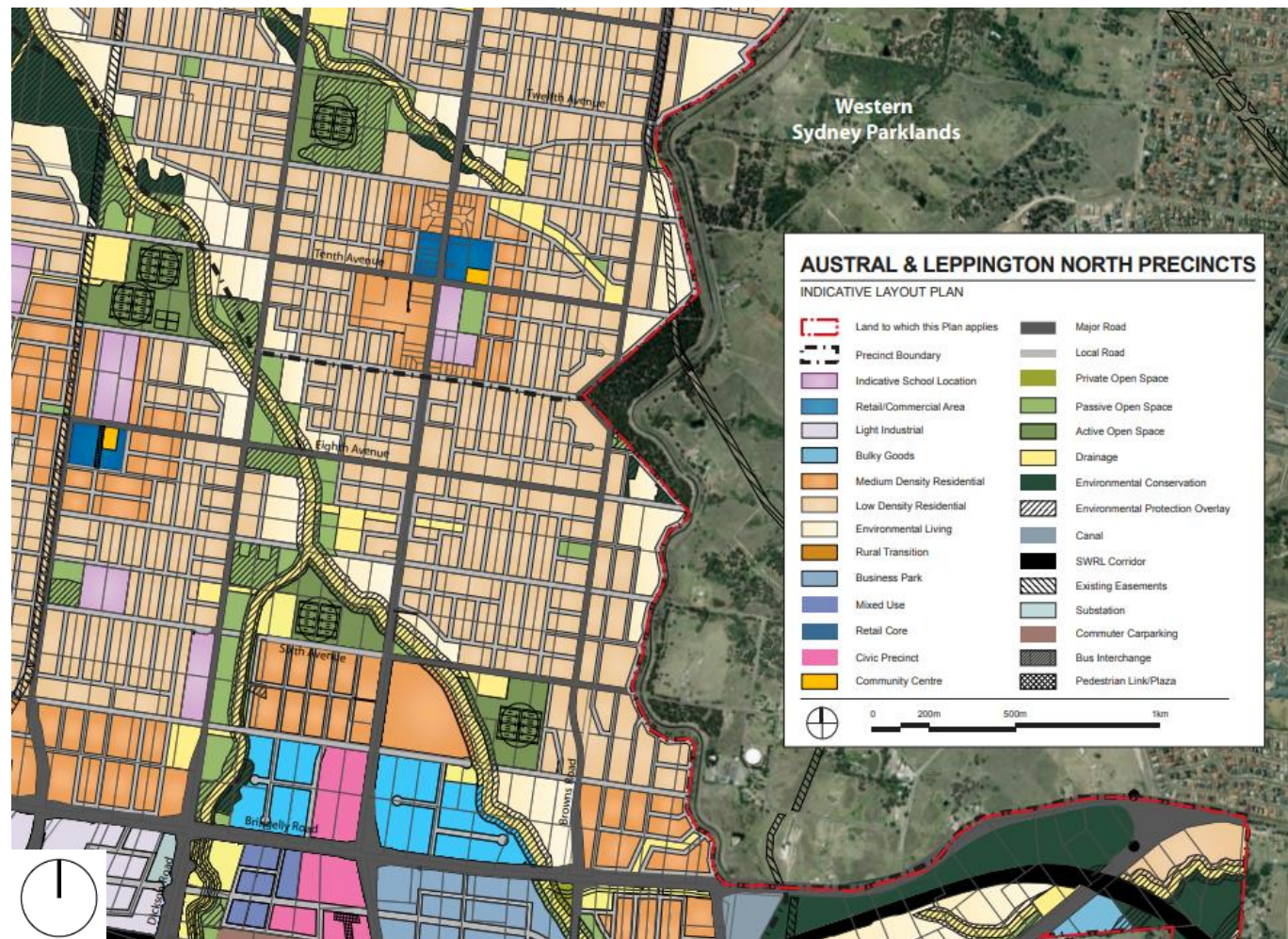


Figure 17: Austral and Leppington North Indicative Layout Plan (Source: NSW Department of Planning, Housing and Infrastructure)